

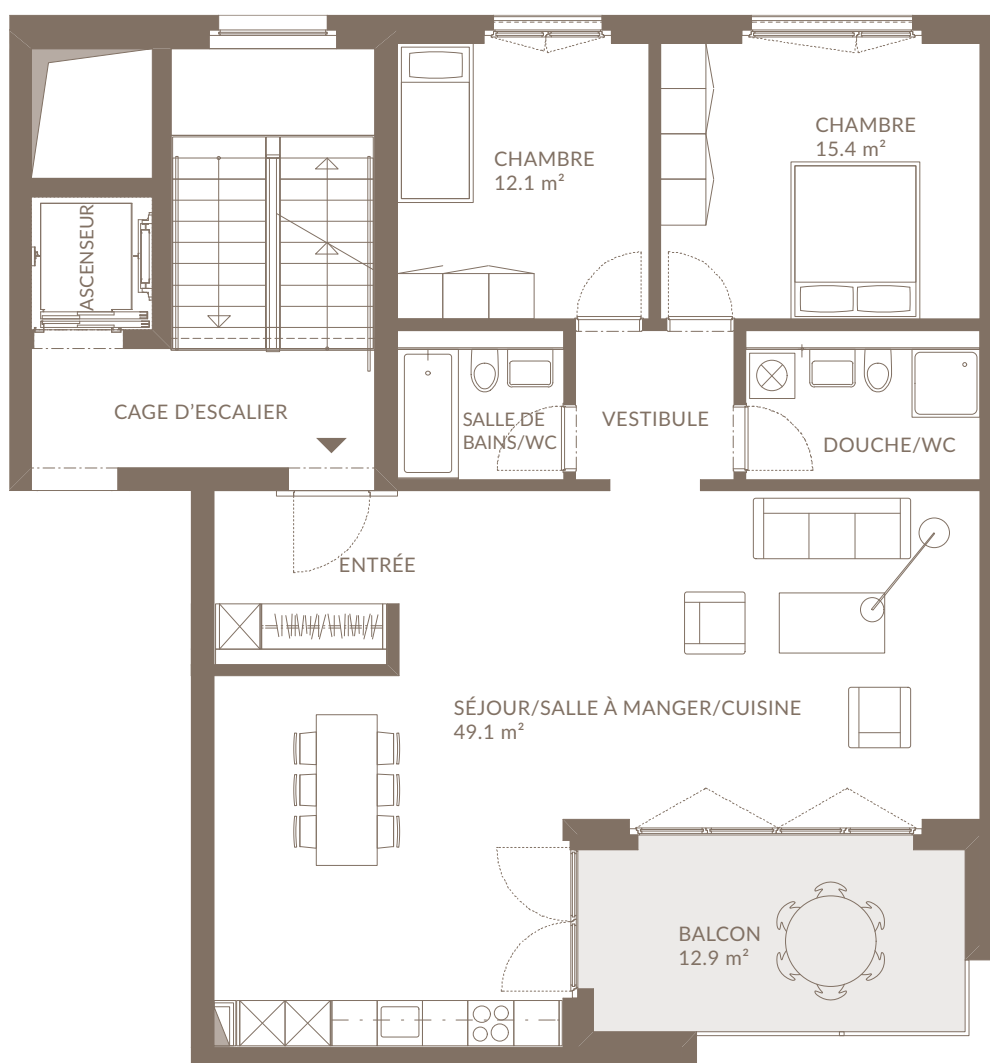
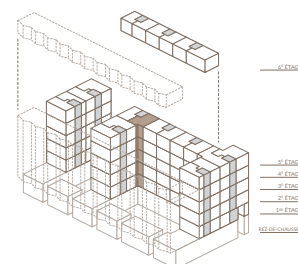
RESIDENCE ESPLANADE BIEL-BIENNE

APPARTEMENT 3,5 PIÈCES 1^{ER} – 5^E ÉTAGE

N° APP.: D10-1-02 / D10-2-02 / D10-3-02 / D10-4-02 / D10-5-02

SURFACE UTILE: 101.8 m²

SURFACE EXTÉRIEURE: 12.9 m²



DATE: 14.12.2016

0 1 2 5
ÉCHELLE 1:100



VERKAUF UND VERMIETUNG

thomasgraf ag

Thunstrasse 9 Postfach 3000 Bern 6
031 350 51 51 info@thomas-graf.ch

thomasgraf
ERFOLG FÜR IMMOBILIEN

VENTE ET LOCATION

Engelmann AG Liegenschaften

Dufourstrasse 32 2502 Biel
032 341 08 85 info@engelmannimmo.ch

engelmann
immo.ch