

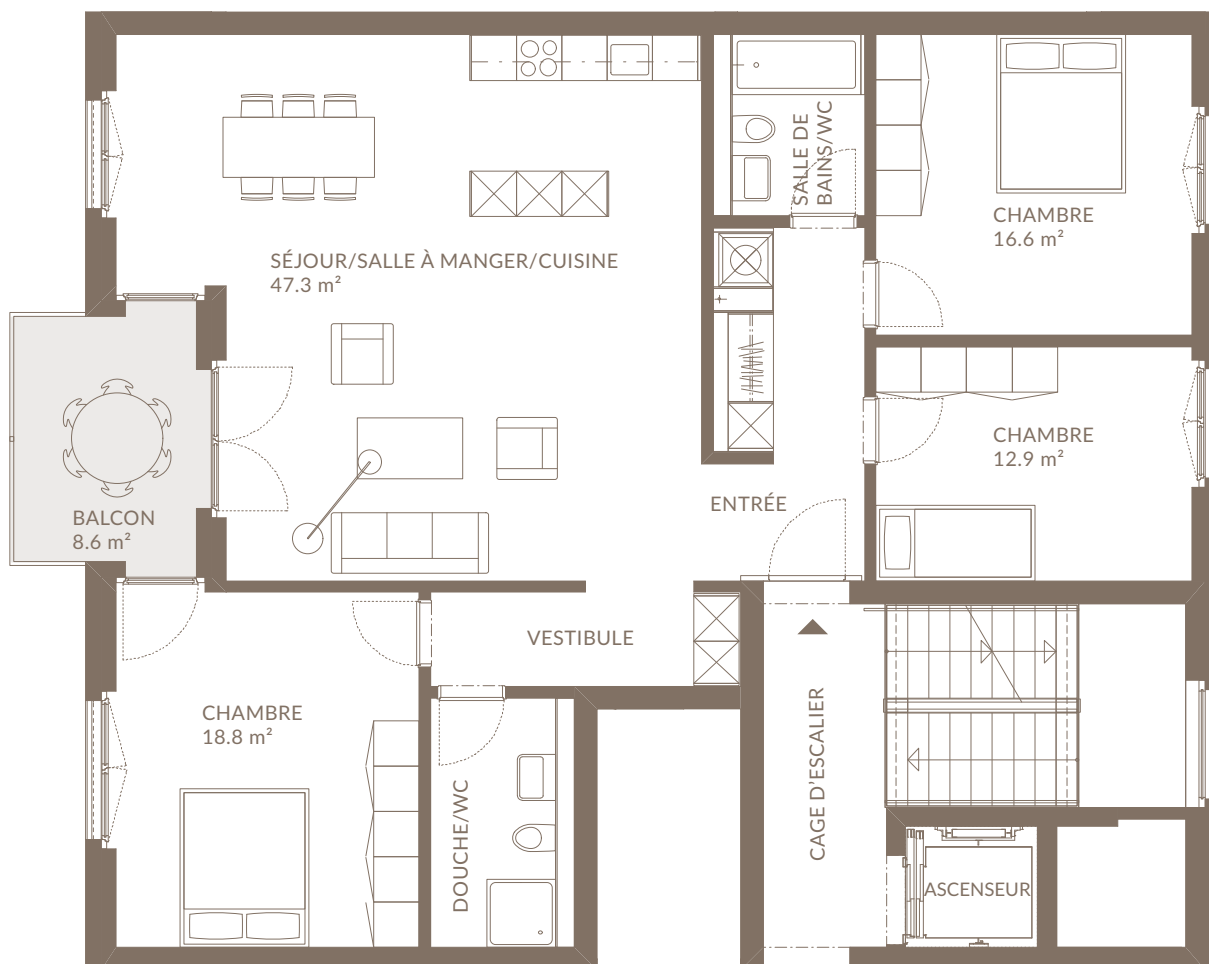
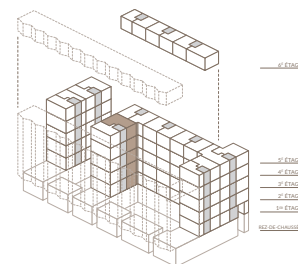
# RESIDENCE ESPLANADE BIEL-BIENNE

## APPARTEMENT 4,5 PIÈCES 1<sup>ER</sup> – 5<sup>E</sup> ÉTAGE

N° APP.: C9-1-02 / C9-2-02 / C9-3-02 / C9-4-02 / C9-5-02

SURFACE UTILE: 127.9 m<sup>2</sup>

SURFACE EXTÉRIEURE: 8.6 m<sup>2</sup>



DATE: 14.12.2016

0 1 2 5  
ÉCHELLE 1:100



### VERKAUF UND VERMIETUNG

thomasgraf ag

Thunstrasse 9 Postfach 3000 Bern 6  
031 350 51 51 info@thomas-graf.ch

**thomasgraf**  
ERFOLG FÜR IMMOBILIEN

### VENTE ET LOCATION

Engelmann AG Liegenschaften

Dufourstrasse 32 2502 Biel  
032 341 08 85 info@engelmannimmo.ch

engelmann  
immo.ch